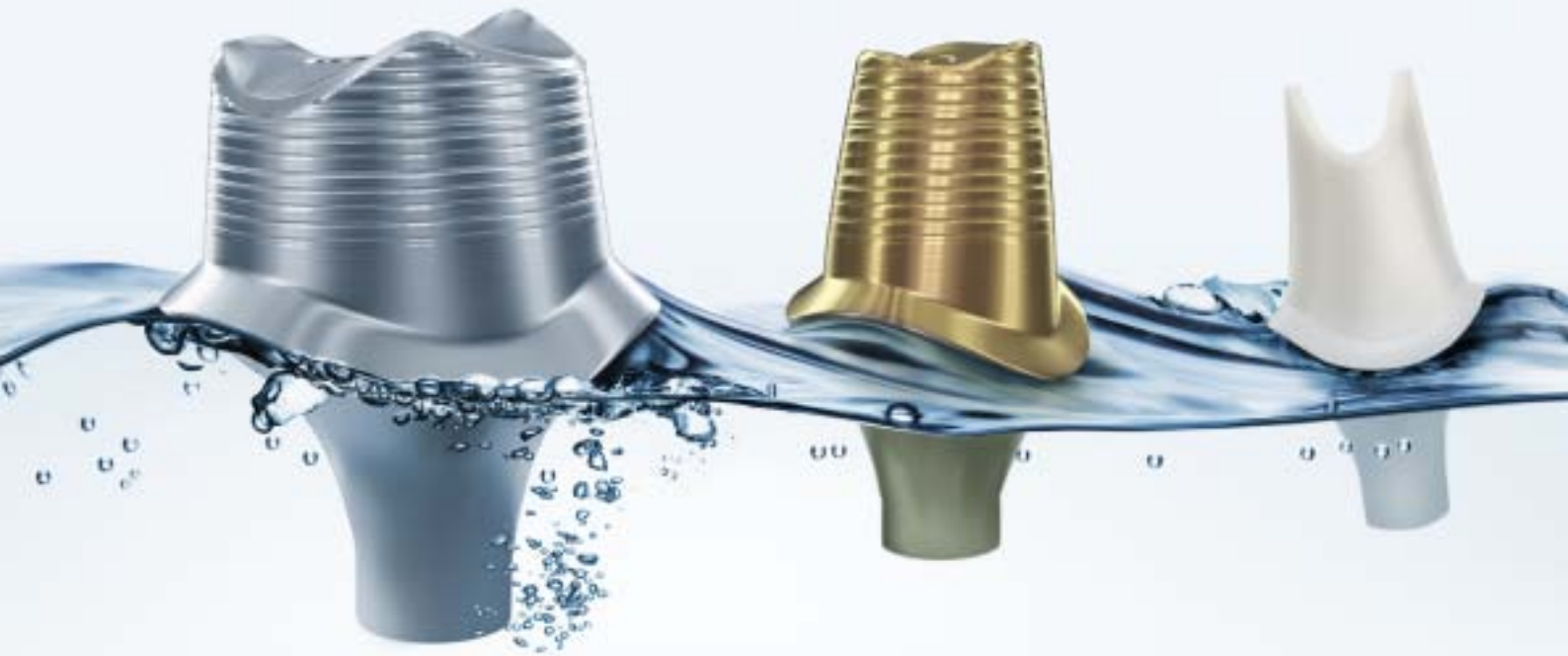


ATLANTIS™ – abutments as
individual as your patients



ATLANTIS™

ATLANTIS™ crown abutment

Patient-specific CAD/CAM abutments for single-tooth,
screw-retained restorations



ATLANTIS™

Excellent results — every time

DENTSPLY Implants now offers the appreciated benefits of its ATLANTIS™ patient-specific CAD/CAM abutments also for single-tooth, screw-retained restorations. The ATLANTIS™ crown abutment is uniquely designed from the final tooth shape for a more natural esthetic result, just like ATLANTIS™ abutment for cement-retained restorations. If you're already familiar with screw-retained restorations on cast abutments, ATLANTIS™ crown abutments will be a welcomed addition to your offering, as they deliver more benefits to your business as well as to your implant patients.

For all major
implant systems

Designed for optimized results

Utilizing the patented ATLANTIS VAD™ (Virtual Abutment Design) software, ATLANTIS™ crown abutment is optimally designed to provide outstanding function and esthetics for single-tooth, screw-retained restorations.

Experience for yourself the freedom of unlimited possibilities with ATLANTIS™.

Versatility and biocompatibility

Indicated for all positions in the mouth, ATLANTIS™ crown abutment is precision milled from solid zirconia blanks. It is available in five shades of biocompatible zirconia, including a new translucent option, ideal for the most natural and esthetic implant-supported restorations.

Streamlined procedures

For dental laboratories

The ATLANTIS™ crown abutment is an efficient and cost effective solution that eliminates the need for casting and modifying procedures, and the use of precious metals. The additional time spent on producing copings for cement-retained abutments is also eliminated.

For clinicians

Compared to cement-retained options, an ATLANTIS™ crown abutment solution is provided as one final component that is placed using only a single step—requiring no modification or cement. As a screw-retained solution, it also allows for easy retrieval, if needed.



The ATLANTIS™ crown abutment is available in five shades of zirconia, which is a biocompatible material and an ideal option for optimized esthetic results. The translucent white shade, shown to the left, is exclusively available for the ATLANTIS™ crown abutment.



ATLANTIS™ patient-specific CAD/CAM crown abutment



Traditional cast abutment

ATLANTIS™ crown abutment vs. traditional cast abutment

In contrast to screw-retained restorations on cast abutments, ATLANTIS™ crown abutment is produced from biocompatible zirconia, and eliminates time spent on modification and casting procedures and the expense of using precious metals.

ATLANTIS™ crown abutment is manufactured using state-of-the-art milling processes to ensure the highest precision and quality—every time.

For added convenience, ATLANTIS™ crown abutment is always delivered with its corresponding abutment screw.

Note: For optimal esthetic results, the abutment screw hole should face the lingual or palatal aspect.

We have you covered

In addition to the great freedom and flexibility ATLANTIS™ patient-specific abutments provide, they come with the added peace of mind of being backed by one of the most comprehensive warranties in the market today.

In fact, DENTSPLY Implants will cover both the abutment and the implant* in situations where an implant supplier will not honor their warranty.

**Subject to the terms and conditions of the ATLANTIS™ warranty.*



For more information on the benefits of ATLANTIS™ solutions for cement- and screw-retained restorations, please visit www.atlantisabutment.com.

ATLANTIS™

ATLANTIS™ BioDesign Matrix™

ATLANTIS™ is comprised of a unique combination of four key features, known as the ATLANTIS BioDesign Matrix™. These features work together to support soft tissue management for ideal functional and esthetic result. This is the true value of ATLANTIS™ for dental laboratories, clinicians and implant patients.



ATLANTIS VAD™

Designed from the final tooth shape. ATLANTIS VAD™ (Virtual Abutment Design) software makes it possible to design each abutment in relation to the edentulous space and the surrounding teeth for high precision and a more natural esthetic result.

Natural Shape™

Shape and emergence profile are based on the individual patient anatomy. The unique anatomical shape and emergence profile of the abutment nourishes soft tissue management and provides optimal support and retention of the final restoration.

Soft-tissue Adapt™

Optimal support for soft-tissue sculpturing and adaptation to the finished crown. The design of each ATLANTIS™ abutment takes biology, anatomy and engineering principles into consideration, providing the right conditions for soft tissue to heal and adapt to the finished crown.

Custom Connect™

Strong and stable fit—customized connection for every major implant system. ATLANTIS™ abutment connections and abutment screws are specifically engineered and tested for each implant interface for optimal fit, stability, and a successful result.

Are you interested to learn more about ATLANTIS™ patient-specific abutments? At www.dentsplyimplants.com you will find contact information for your local representative. You can also visit www.atlantisabutment.com for more information.



www.dentsplyimplants.com

ATLANTIS™

– the freedom of unlimited possibilities

Discover why ATLANTIS™ CAD/CAM abutments are the natural choice for patient-specific, cement-retained implant prosthetics. Available for all major implant systems, ATLANTIS™ abutments are individually designed from the final tooth shape thanks to the patented ATLANTIS VAD™ (Virtual Abutment Design) software. The result is an abutment that provides a foundation for the best possible function and long-term esthetics. Experience for yourself the freedom of unlimited possibilities with ATLANTIS™.

For all major implant systems

- DENTSPLY Implants* • Nobel Biocare
- Straumann • Biomet 3i • Zimmer Dental

For the complete ATLANTIS™ Implant Compatibility chart go to www.atlantisabutment.com



Courtesy of Dr. Julian Osorio, Dr. Keith Phillips and Dr. Harold van der Burg

All trademarks are the property of their respective owners.

* DENTSPLY Implants is the union of Astra Tech Dental and DENTSPLY Friadent.

Because teeth are not round

The human body has a remarkable ability to heal under the right conditions. ATLANTIS™ abutments are designed and produced for the specific edentulous spaces they will fit and in relation to the surrounding teeth and soft tissue, taking biology, anatomy and engineering principles into consideration.

As individual as every patient

The unique anatomical shape and emergence profile of the abutment promotes long-term soft-tissue management and provides optimal support and retention of the final restoration.

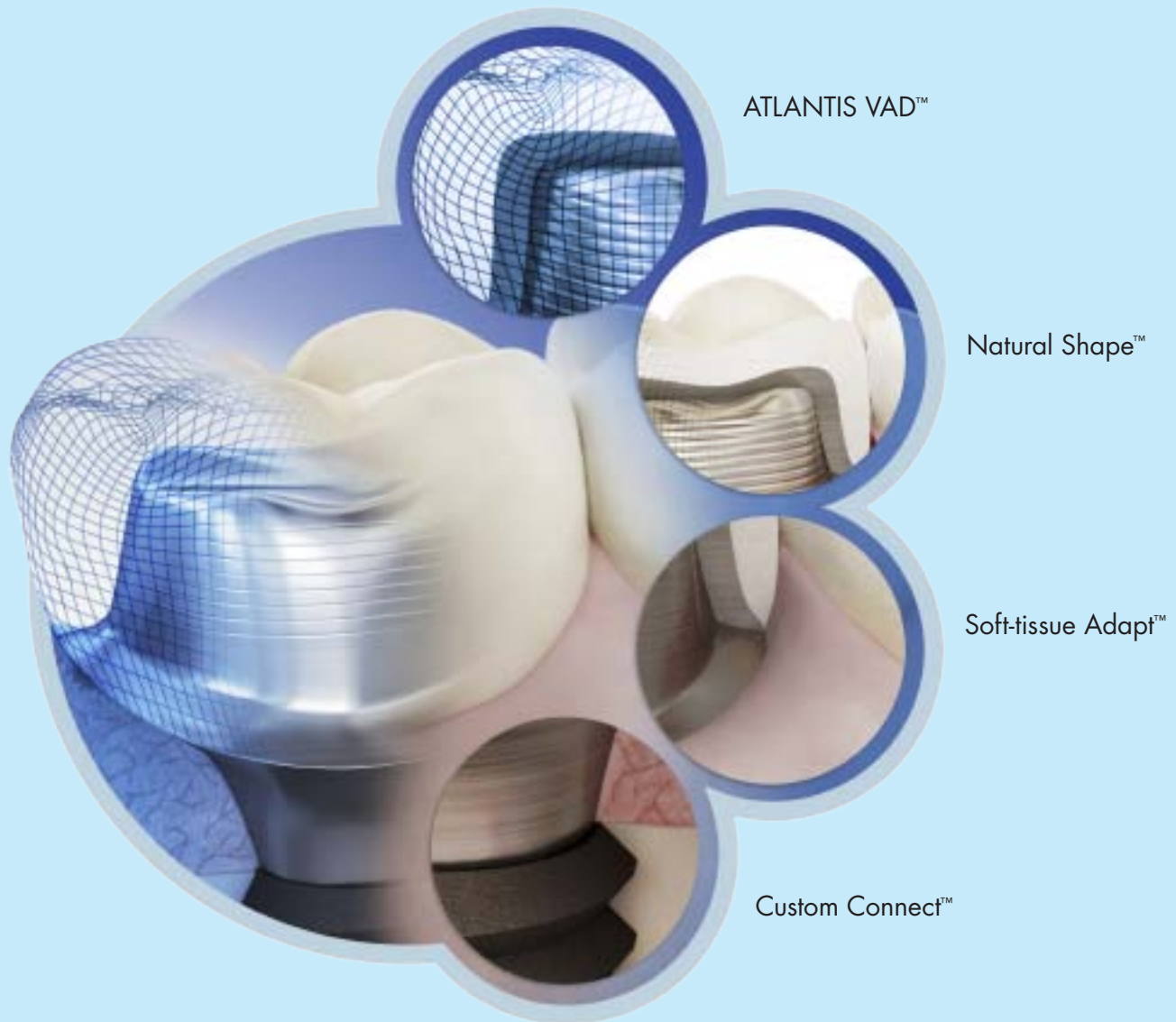
Margins can be placed at an ideal level for easy and safe removal of excess cement.



ATLANTIS™ patient-specific
CAD/CAM abutments

Stock abutments

ATLANTIS™
BioDesign Matrix™



ATLANTIS™ is comprised of a unique combination of four key features known as the ATLANTIS BioDesign Matrix™. These features work together to support soft tissue management for ideal functional and esthetic results. This is the true value of ATLANTIS™ for you and your patients.

ATLANTIS VAD™

Designed from the final tooth shape. ATLANTIS VAD™ (Virtual Abutment Design) software makes it possible to design each abutment in relation to the edentulous space and the surrounding teeth for high precision and a more natural esthetic result.

Natural Shape™

Shape and emergence profile are based on the individual patient anatomy. The unique anatomical shape and emergence profile of the abutment nourishes long-term soft tissue management and provides optimal support and retention of the final restoration.

Soft-tissue Adapt™

Optimal support for soft-tissue sculpturing and adaptation to the finished crown. The design of each ATLANTIS™ abutment takes biology, anatomy and engineering principles into consideration, providing the right conditions for soft tissue to heal and adapt to the finished crown.

Custom Connect™

Strong and stable fit – customized connection for every major implant system. ATLANTIS™ abutment connections and abutment screws are specifically engineered and tested for each implant interface for optimal fit and stability, and a successful long-term result.

Why ATLANTIS™ patient-specific abutments?

ATLANTIS™ offers many important advantages compared to stock abutments:

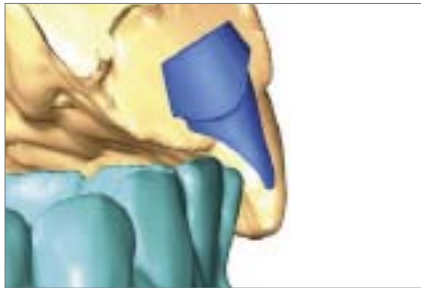
- Possibility to create an anatomically optimal emergence profile, supporting long-term esthetics
- Margins can be placed at an ideal level for easy and safe removal of excess cement
- Abutment design gives optimal support and retention of the final restoration
- Eliminates the time needed for inventory management and chairside modification
- Simple restorative procedure – just take an impression and send it to your laboratory
- Available for the widest range of implant interfaces and gives you the freedom to choose between titanium, gold-shaded titanium and zirconia (available in different shades)



Bringing simplicity and esthetics to your practice

“Chairtime has decreased dramatically since I started using the Atlantis abutments a decade ago. The ATLANTIS™ solution also fundamentally addresses implant-borne restorations by taking into consideration the ideal contours of a natural tooth when designing the abutment. After all, our patients are coming to us for the replacement of natural looking teeth, not the placement of dental implants.”

ROBERT M. HUMPHRIES, DDS, MS KALAMAZOO, MICHIGAN, USA



ATLANTIS™ abutments are designed in a virtual environment with the ideal bucco-lingual, mesio-distal and inciso-cervical dimensions, taking into account the surrounding dentition and opposing occlusion.



The abutment is uniquely designed from the desired tooth shape thanks to the patented ATLANTIS VAD™ software.



The final restoration has the appearance of a natural tooth with the added benefit of proper gingival contours maintained.

ATLANTIS™

Choice of biocompatible materials

With ATLANTIS™, you can look forward to the freedom to choose the optimal material according the unique requirements of each case.



ATLANTIS™ abutment, titanium are among the first CAD/CAM abutments that are anatomically designed for each patient. Suitable for all positions in the mouth.

ATLANTIS™ abutment, GoldHue™ titanium with a thin coating of biocompatible titanium nitride (TiN). This gives a warm gold-shaded tone under the gingiva for a natural result. Suitable for all positions in the mouth.

ATLANTIS abutment, zirconia (available in different shades) is perfect for challenging cases in the esthetic zone and is strong enough to be used in all positions in the mouth.

Additional benefits of ATLANTIS™

Experience the ease of working with ATLANTIS™. Simply put, you can look forward to flexibility and reliability every step of the way.

Abutment screw

All ATLANTIS™ abutments are delivered with the corresponding abutment screw, specially designed and produced to match its internal geometry.

Parallel abutments

If a final restoration for a case will be splinted, the abutments must be designed to be parallel. ATLANTIS VAD™ makes this easy.

Duplicate abutment

A functionally identical duplicate of the original ATLANTIS™ abutment can be ordered and delivered together with the original abutment. The duplicate abutment can serve as a master die for enhanced laboratory accuracy and optimized crown fit and eliminates the need for you to remove the abutment placed in the patient's mouth.

Note: Zirconia option not available for duplicate abutment.

Later order

Orders for an original ATLANTIS™ abutment can be placed at a later date with or without changes to the existing abutment design. The digital technology of the ATLANTIS™ solution eliminates the time needed for additional impressions and registrations or for modification of the abutment by hand.



You have the possibility to place a later order of an ATLANTIS™ abutment, with or without changes to original abutment design.

ATLANTIS™

Designed from the final tooth shape

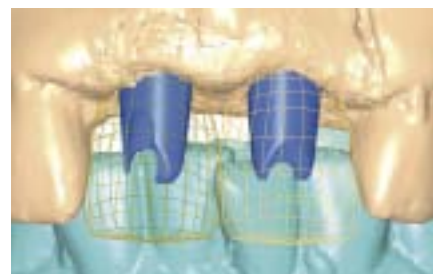
Using ATLANTIS VAD™ software, abutments are individually designed from the final tooth shape for a more natural esthetic result. This unique process offers unlimited possibilities and patient-specific solutions for single, multiple and full arch units.



The scanned model is transformed into a 3D image, making it possible to create the desired tooth shape.



When the optimal dimensions of the desired tooth have been determined, the abutments are designed.



The final design is checked for fit and occlusal clearance before the abutments are manufactured.

Optimized 3D scanning of the upper and lower jaw models generates an exact virtual image. The virtual image allows each ATLANTIS™ abutment to be individually designed and produced for the specific space it will fit and in relation to the surrounding teeth.

To provide an ideal and individualized prosthetic solution for all your implant patients, simply send an implant-level impression with your specifications to your dental laboratory and ask for ATLANTIS™.

ATLANTIS™ warranty – we have you covered

Naturally, the abutment solution that offers the greatest freedom is also backed by the most comprehensive warranty. In fact, if an implant supplier fails to honor their warranty in conjunction with the use of an ATLANTIS™ abutment, DENTSPLY Implants will cover both the abutment and the implant*.



*Subject to the terms and conditions of the ATLANTIS™ warranty

Visit www.atlantisabutment.com for more information.

ATLANTIS™

ATLANTIS™ – patient-specific abutments

The ATLANTIS™ abutment is a CAD/CAM solution for patient-specific cement and screw-retained implant restorations. ATLANTIS is comprised of a unique combination of four key features, summarized under the term ATLANTIS BioDesign Matrix™. Together the key features facilitate the soft tissue management for optimal functional and esthetic results. Using the ATLANTIS VAD™ (Virtual Abutment Design) software, the abutments are individually designed based on the desired final tooth shape for an esthetic result. Moreover, the software makes it possible to locate the margin in an optimal position, i.e. more coronally, in order to avoid cement-related complications. ATLANTIS abutments are available for all major implant systems, including the ASTRA TECH Implant System™ where the abutments are designed to function in harmony with the features and benefits of the ASTRA TECH Implant System BioManagement Complex™. The abutments are available in zirconia (white and shaded), titanium and gold-shaded titanium.

The clinical use of the ATLANTIS abutment has been described in numerous case reports. Excellent esthetic results have been reported for both titanium¹⁻¹¹, gold-shaded titanium¹² and zirconia¹³⁻¹⁵ abutments. Moreover, advantages such as reduced chairtime¹⁶⁻¹⁸, cost-effective and simplified treatment procedures^{8,19}, reduced number of impressions with duplicate abutments^{1, 2, 7, 10, 19, 20}, accuracy of fabrication^{21, 22}, optimal fit between abutment and implant^{23,24}, ideal fit and retention of copings^{16,25}, and establishment of optimal soft tissue contour and emergence profile^{4, 7, 10, 26} have been described for the ATLANTIS abutment. Excellent mechanical properties have been reported for the zirconia ATLANTIS abutment²¹. An in vitro study comparing the mechanical properties of ATLANTIS and Procera™ (Nobel Biocare)* zirconia abutments found superior results for the ATLANTIS abutments in terms of strength and probability to survive occlusal forces²¹.

*ATLANTIS™, VAD™, ASTRA TECH Implant System™, ASTRA TECH Implant System BioManagement Complex™ are trademarks of DENTSPLY IH, all other trademarks are the property of respective owners.

1. Ganz S. Computer-milled patient-specific abutments: incredibly quality with unprecedented simplicity. *Implantology* 2003;2003:37-44.
2. Ganz SD. CT-derived model-based surgery for immediate loading of maxillary anterior implants. *Pract Proced Aesthet Dent* 2007;19(5):311-8; quiz 20, 02. [Abstract in PubMed](#)
3. Holt LR. A case study: A custom posterior abutment compared with a prefabricated stock abutment. *Inside Dentistry* 2008;Sept:2-3.
4. Kerstein RB, Castellucci F, Osorio J. Ideal gingival form with computer-generated permanent healing abutments. *Compend Contin Educ Dent* 2000;21(10):793-7, 800-1; quiz 02. [Abstract in PubMed](#)
5. Kois JC, Kan JY. Predictable peri-implant gingival aesthetics: surgical and prosthodontic rationales. *Pract Proced Aesthet Dent* 2001;13(9):691-8; quiz 700, 21-2. [Abstract in PubMed](#)
6. Nazarian A. Easier implant restoration: CAD/CAM generated implant abutments. *Contemporary Esthetics* 2007;February:44-48.
7. Schneider A, Kurtzman GM. Computerized milled solid implant abutments utilized at second stage surgery. *Gen Dent* 2001;49(4):416-20. [Abstract in PubMed](#)
8. Whitesides L. Evaluation of the Atlantis abutment in implant restoration. *Inside Dentistry* 2006;September:98-99.
9. Ganz SD. Use of stereolithographic models as diagnostic and restorative aids for predictable immediate loading of implants. *Pract Proced Aesthet Dent* 2003;15(10):763-71; quiz 72. [Abstract in PubMed](#)
10. Ganz SD. Defining new paradigms for assessment of implant receptor sites. The use of CT/CBCT and interactive virtual treatment planning for congenitally missing lateral incisors. *Compend Contin Educ Dent* 2008;29(5):256-8, 60-2, 64-7; quiz 68, 78. [Abstract in PubMed](#)
11. Pansick E, Attanasi R. Atlantis™ patient-specific abutments. *Inside Dentistry* 2010;6(6):1-3.
12. Martin R. Astra Tech OsseoSpeed™ 3.0S implant. *Inside Dentistry* 2010;6(4):2-4.
13. Petrungraro P, Smilanich M, Jimenez E. Use of ceramic abutments in the esthetic zone to enhance implant esthetics. *Inside Dentistry* 2007;February:2-5.
14. Watkin A, Kerstein RB. Improving darkened anterior peri-implant tissue color with zirconia custom implant abutments. *Compend Contin Educ Dent* 2008;29(4):238-40, 42. [Abstract in PubMed](#)
15. Whitesides LM. Solution for the challenging implant. *Dent Today* 2008;27(2):146, 48. [Abstract in PubMed](#)
16. Adams MW. Computer-designed and milled patient-specific implant abutments. *Dent Today* 2005;24(6):80-3. [Abstract in PubMed](#)
17. Ganz S. Finally, a 'win-win' solution: Increasing accuracy while saving time, money with computer-milled abutments. *Dental Economics* 2005;May.
18. Osorio J. Use of the Atlantis Abutment in restorative practice speeds time to function and aesthetics. [Interview]. *Dent Implantol Update* 2000;11(8):57-62. [Abstract in PubMed](#)
19. Garg AK. The Atlantis Components Abutment: simplifying the tooth implant procedure. *Dent Implantol Update* 2002;13(9):65-70. [Abstract in PubMed](#)
20. Kerstein RB, Osorio J. Utilizing computer-generated duplicate titanium custom abutments to facilitate intraoral and laboratory implant prosthesis fabrication. *Pract Proced Aesthet Dent* 2003;15(4):311-4. [Abstract in PubMed](#)
21. Kerstein RB, Radke J. A comparison of fabrication precision and mechanical reliability of 2 zirconia implant abutments. *Int J Oral Maxillofac Implants* 2008;23(6):1029-36. ID No. 79174 [Abstract in PubMed](#)
22. Fuster-Torres MA, Albalat-Estela S, Alcaniz-Raya M, Penarrocha-Diago M. CAD / CAM dental systems in implant dentistry: update. *Med Oral Patol Oral Cir Bucal* 2009;14(3):E141-5. [Abstract in PubMed](#)
23. Apicella D, Veltri M, Chieffi N, et al. Implant adaptation of stock abutments versus CAD/CAM abutments: A radiographic and scanning electron microscopy study. *Annali di Stomatologia* 2010;1(3-4):9-13. [Abstract in PubMed](#)
24. Sumi T, Braian M, Shimada N, et al. Characteristics of implant-CAD/CAM abutment connections of two different internal connection systems. *Journal of Oral Rehabilitation* 2011;E-pub: 19 dec 2011. DOI: 10.1111/j.1365-2842.2011.02273.x. [Abstract in PubMed](#)
25. Ganz SD, Desai N, Weiner S. Marginal integrity of direct and indirect castings for implant abutments. *Int J Oral Maxillofac Implants* 2006;21(4):593-9. ID No. 79029 [Abstract in PubMed](#)
26. Bergstresser J. Implant abutment tissue strategies. *Journal of Dental Technology* 2009;August/September:34-36.

ATLANTIS™ BioDesign Matrix™

ATLANTIS™ is comprised of a unique combination of four key features, known as the ATLANTIS BioDesign Matrix™. These features work together to support soft tissue management for ideal functional and esthetic result. This is the true value of ATLANTIS™ for dental laboratories, clinicians and implant patients.

- ATLANTIS VAD™ – designed from the final tooth shape and the individual patient anatomy.
- Natural Shape™ – shape and emergence profile based on individual patient anatomy
- Soft-tissue Adapt™ – optimal support for soft tissue sculpturing and adaptation to the finished crown.
- Custom Connect™ – strong and stable fit – customized connection for all major implant systems.



Are you interested to learn more
about ATLANTIS™ patient-specific abutments?
At www.dentsplyimplants.com you will find contact
information for your local representative. You can
also visit www.atlantisabutment.com
for more information.



www.dentsplyimplants.com